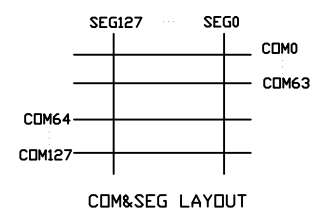
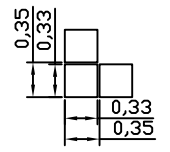
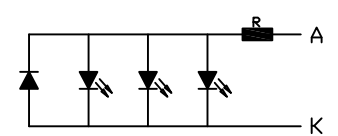


PIN ASSIGNMENT

NO.	SIGNAL
1	DB0
2	DB1
3	VSS
4	DB2
5	DB3
6	VSS
7	DB4
8	DB5
9	VSS
10	DB6
11	DB7
12	VSS
13	E_RD
14	RS
15	/RESET
16	VDD
17	LED+
18	LED+
19	LED-
20	LED-

- NOTE:
1. GENERAL TOLERANCE: $\pm 0,30$.
 2. (...) IS REFERENCE DIMENSION.
 3. * CRITICAL DIMENSION
 4. COMPLYABLY RoHS.



Display Type	DFSTN NEGATIVE TRANSMISSIVE
Front Polarizer	
Operating Method	1/128 DUTY, 1/12 BIAS
Viewing Angle	12 O'CLOCK
LCD Driver IC	NT7508
Logic Voltage (V)	3.3V
LCD Driving Voltage	13.8V
Operation Temperature	-20°C TO 70°C
Storage Temperature	-30°C TO 80°C
Interface	6800-parallel
Backlight	WHITE(3LED 3.8±0.20V, 35mA)

VER.	SYMBOL	AMENDMENT	SIGN	DATE	CUSTOMER'S APPROVAL	DRAWN	JLF	TITLE	DRAWING NO.			
						EE.CHECKED	LXY	MODULE SPEC	STR-TG3135			
						PE.CHECKED	LXY		UNIT	mm	SCALE	FIT
						APPROVED	YB		BOM NO. : BM110513-01-D	3rd Angle		SHEET 1 OF 1
01		first issue	JLF	12.05.10				TRUEVISION TECHNOLOGIES LTD.				